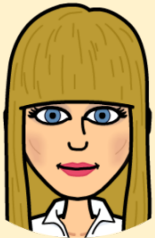


Year 6 Parent Meeting

Miss Brown



Mr Carrigan



Mr Jones



Agenda

- Year 6 expectations
- Supporting your child
- Bloomz
- Residential & other opportunities
- SATs & assessment
- Secondary School

Year 6 Expectations

End of Year Expectations for Year 6

- Expectations are based on the **New National Curriculum** and the age expected standards for the Year Group.
- All objectives will be worked on throughout the year and will be the focus of direct teaching.
- Any extra support you can provide in helping your child to achieve these is greatly valued.

Supporting Your Child

Home/School Support

- Number Gym
- MyMaths
- Homework Club (Every Monday from 3.15 - 4.00)
- Reading Booster (Every Monday and Wednesday from 8.20 - 8.50)
- Maths Booster (Every Tuesday between 8.20 - 8.50)
- Daily reading

Top Tips

- Keep calm!
- Provide healthy snacks
- Encourage regular exercise
- Ensure a good night's sleep
- Provide a good breakfast on mornings
- Encourage your child to do well.

Bloomz

Bloomz



- Bloomz is an app that helps you, as parents, stay in touch with your child's teacher and know what is happening in their class.
- It is used to help you receive quick updates from your child's teacher, among other things.

Reasons to use Bloomz



It adapts to you. You can use Bloomz on any device, whether it's your PC, Mac, tablet, iPad, iPhone or Android phone. You can also choose to receive notifications via the app directly on your phone, or via email.

It's easy to use. Once you sign up for Bloomz, all the teacher updates will appear in a time feed, and you can check the class calendar for important events.

It is safe and private. The teacher has control of who participates in the classroom, and you only share the information you want to share. In addition, there is no advertising in the app.

Find out what your child really learned today. The more connected you are to what's happening in your child's classroom, the easier it is to have meaningful conversations over dinner that go beyond.

**Residential &
Other
Opportunities**

RESIDENTIAL

<https://drive.google.com/file/d/0BxShCKyizbFwNEIUZFdZUzNKSlk/view?ts=5975e750>

When

Monday 16th - Thursday 19th July 2018

Total Cost

£205

Deposit

A £50 deposit is required to secure a place by the end of October half term.

- Balances can be paid via ParentPay in a lump sum or part payments of £20.
- £205 but must be paid by 9th April.

OTHER OPPORTUNITIES

- Cook School
- Football club
- Orchestra
- Creative Writing Club
- Peer mentors
- Trip to Forbidden Corner
- Production
- and many more ...

SATs & Assessment

KS2 Tests - May

2018

Monday 14th May

Tuesday 15th May

Wednesday 16th May

Thursday 17th May

English reading test: reading booklet and associated answer booklet.

English grammar, punctuation and spelling test: Paper 1 short answer questions.

English grammar, punctuation and spelling test: Paper 2 spelling.

Mathematics: Paper 1 arithmetic test.

Mathematics: Paper 2 reasoning

Mathematics: Paper 3 reasoning

KS2 SATs - What you need to know

In the summer term of 2016, children in Year 2 and Year 6 were the first to take the new [SATs](#) papers. The new-style SATs for English and maths reflect the new national curriculum, and are more rigorous than previous years' tests. There is also a completely [new SATs marking scheme and grading system](#) which has replaced national curriculum levels.

At the end of Year 6, children sit tests in:

- **Reading**
- **Maths**
- **Spelling, punctuation and grammar**

These tests are both set and marked externally, and the results are used to measure the school's

Key Stage Two Reading

The reading test is a single paper with questions based on three passages of text. **Your child will have one hour, including reading time, to complete the test.**

There will be a selection of question types, including:

- **Ranking/ordering**, e.g. 'Number the events below to show the order in which they happen in the story'
- **Labelling**, e.g. 'Label the text to show the title of the story'
- **Find and copy**, e.g. 'Find and copy one word that suggests what the weather is like in the story'
- **Short constructed response**, e.g. 'What does the bear eat?'

Key Stage Two grammar, punctuation and spelling test

The grammar, punctuation and spelling test consists of two parts: a **grammar and punctuation paper** requiring short answers, lasting 45 minutes, and an **aural spelling test of 20 words**, lasting around 15 minutes.

The grammar and punctuation test will include two sub-types of questions:

- **Selected response**, e.g. 'Identify the adjectives in the sentence below'
- **Constructed response**, e.g. 'Correct/complete/rewrite the sentence below,' or, 'The sentence below has an apostrophe missing. Explain why it needs an apostrophe.'

KS2 Maths

Children sit three papers in maths:

- Paper 1: **arithmetic**, 30 minutes
- Papers 2 and 3: **reasoning**, 40 minutes per paper

Paper 1 will consist of fixed response questions, where children have to give the correct answer to calculations, including long multiplication and division. Papers 2 and 3 will involve a number of question types, including:

- Multiple choice
- True or false

How will KS2 SATs be marked?

The previous [national curriculum levels](#) have been scrapped, and instead children are given scaled scores.

You will be given your child's raw score (the actual number of marks they get), alongside their scaled score and whether they have reached the expected standard set by the Department for Education ('NS' means that the expected standard was not achieved and 'AS' means the expected standard was achieved).

The range of scaled scores available for each KS2 test is:

- 80 (the lowest scaled score that can be awarded)
- 120 (the highest scaled score)

Teacher-assessment results at the end of Year 6

As well as receiving KS2 SATs results, at the end of Y6 you will be told your child's teacher-assessment results for reading, writing, mathematics and science. The teacher-assessment result codes you can expect to see are:

- **GDS:** Working at greater depth within the expected standard (for writing assessment only)
- **EXS:** Working at the expected standard
- **WTS:** Working towards the expected standard (for writing assessment only)
- **BLW:** The child is working below the expected standard (the lowest level of attainment)

<https://www.youtube.com/watch?v=AlaN-KH1Pcg>

Secondary School

Gail Naish



g.naish@huntington-ed.org.uk

Summary

Remember...

- Year 6:
- is a challenging and exciting year
- helps to prepare the children for secondary
- helps to prepare the independent learners
- has many opportunities
- is FUN!



Also, remember that the Year 6 team are here to help and want the best for your